

# DIGITAL DENTAL EQUIPMENT

---

**CEDU3D**

Professional digital dental equipment and material supplier



# DIGITAL DENTAL LAB EQUIPMENT



# COMPANY HISTORY

---

## 2015

Established on December 29, 2015 in Hangzhou, the core team consists mainly of doctors and masters in computer related fields.

## 2016-2017

Winning the New Star Award in the Sino Italian Innovation and Entrepreneurship Competition;  
Winning the Excellence Award in Zhejiang Province Innovation Competition;  
Obtaining multiple relevant national patents;

## 2018-2019

The third-generation dental desktop scanner in mass production. Domestic and international sales team built, cooperative relationships with numerous brands established, The software was launched with a completely new algorithm system.



Hangzhou CEDU Technology Co., Ltd. was established on December 29, 2015, focusing on the research and application of oral 3D machine vision. The core team members of the company are mainly composed of doctors and masters in computer and related fields. They have nearly 10 years of technical experience in the field of medical oral 3D detection and have multiple key patented technologies. CEDU Technology has always been committed to introducing the latest digital dental technologies into the field of oral treatment and dental processing, and driving our design and manufacturing of dental scanners, aiming to bring higher production efficiency and better solutions to customers.

## 2020

The new version of desktop scanner software has been released, with more functions, faster speed, clearer details, and better integration with design software.

## 2022

The completion of the demo of intraoral scanner.

## 2024

The intraoral scanner is ready for mass production, and the higher precision dental desktop scanner is ready for market.



# DIRECTORY



## 01

Intraoral scanner ..... 1-2

Configuration ..... 3-4

Function Overview ..... 5-6

## 02

Dental desktop scanner ..... 8

Function Overview ..... 9

Configuration ..... 10



# INTRAORAL SCANNER



INTELLIGENCE



HIGH PRECISION



BETTER USER  
EXPERIENCE



# NEW INTRAORAL SCANNER

A high-end dental digital scanner specially developed for the dental industry, with advanced dynamic 3D scanning technology, it provides high-speed imaging, real color, and higher scanning accuracy for users.

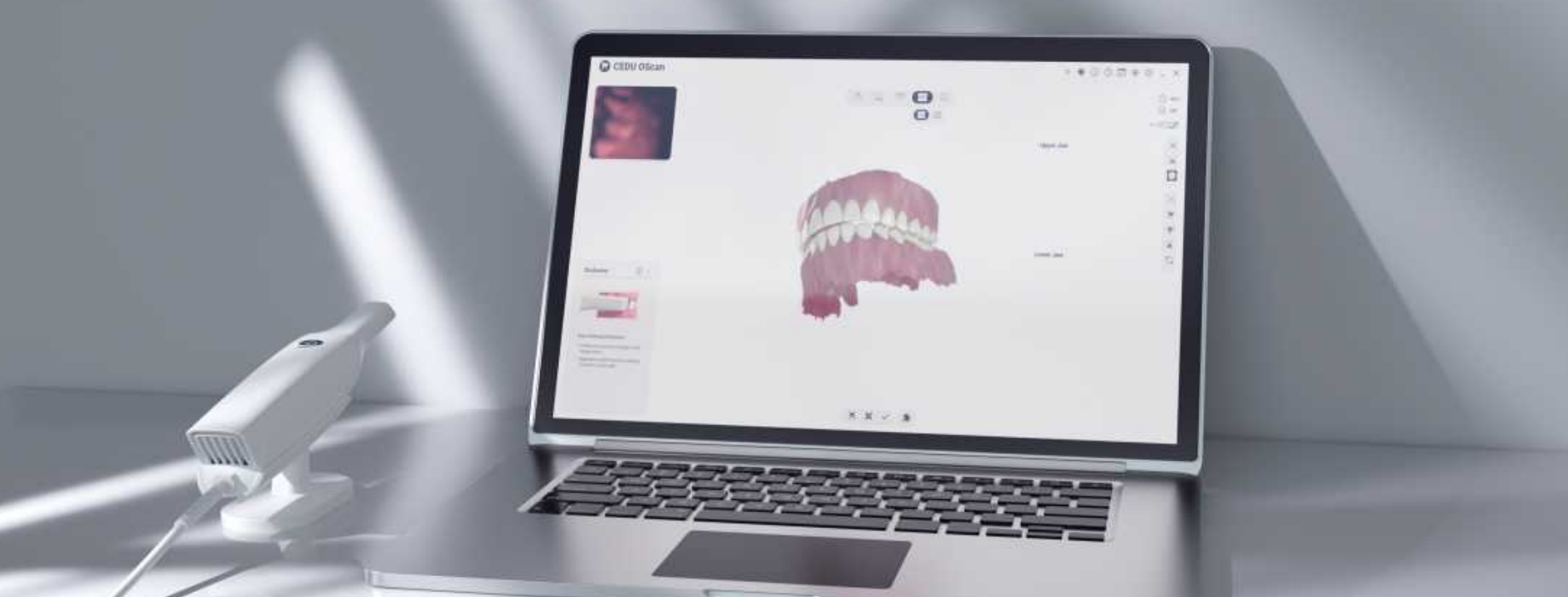
High temperature and high pressure disinfection for more than 100 times

Small and light



control button

Switch on / off



## SYSTEM CONFIGURATION

Please check if your configuration meets the minimal recommended configuration.

	Laptop computer	Desktop computer
CPU	Intel Core i7-9850H	Intel Core i7-10900K
RAM	32GB	
GPU	NVIDIA Geforce RTX 2060 8GB	NVIDIA Geforce RTX 2080 8GB
Operating System	Windows10 64bit	



# PRODUCT PARAMETERS

The scanning parameters			
	Used to the environment		
	The real value	Repeat accuracy	Mouth internal environment
Single tooth	5.3μm ± 0.34	3.2μm ± 0.49	10μm
1/4Teeth and jaw	17.3μm ± 0.43	6.3μm ± 0.63	25μm
All teeth and jaw	21μm ± 1.48	22.6μm ± 7.55	50μm

OScan	Parameter
Scanning technique	Structured light imaging technology
Product size (L*W*H)	290mm*45mm*40mm
Product weight	200g
Scan head size (L*W*H)	45mm*35mm*100mm
Single scan range	13*14mm
Scan depth	-2mm-20mm
3D data format	STL, PLY, OBJ, support customized encrypted format files
Interface	USB 3.0
Full port scanning time	<2 min
Light source	Blue LED
Frame rate	30FPS

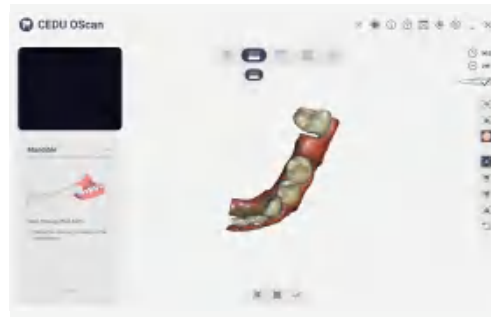
# CEDU INTRAORAL SCANNER COMPLETE SCANNING FUNCTION

CEDU has always been committed to providing users with a shortcut to digitalization of the oral cavity, insisting on continuous innovation to improve the patient experience for users.



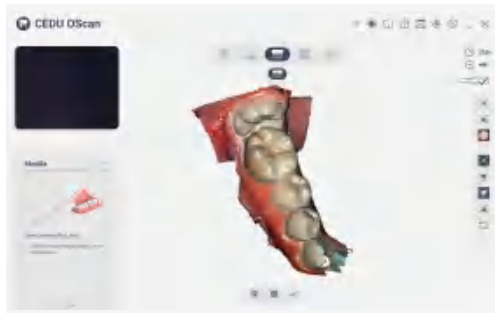
## [ORTHODONTIC SIMULATION]

Simulate orthodontic treatment plans, and the expected effects can be viewed based on different treatment plans.



## [AI REMOVAL OF SOFT TISSUE]

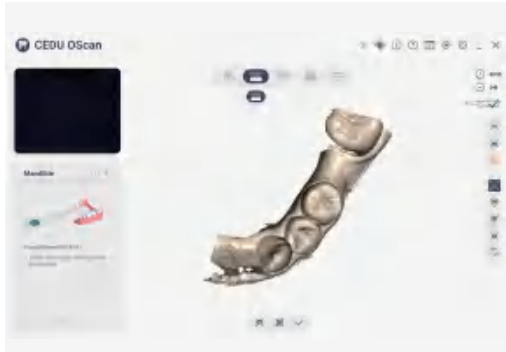
Suitable for edentulous jaws, routine restoration and implantation, and orthodontic cases.



## [REMOVE THE ISOLATED ISLAND]

Click to delete scanned independent model data that is smaller and not connected to the main model data. Easy to quickly delete unrelated model data.





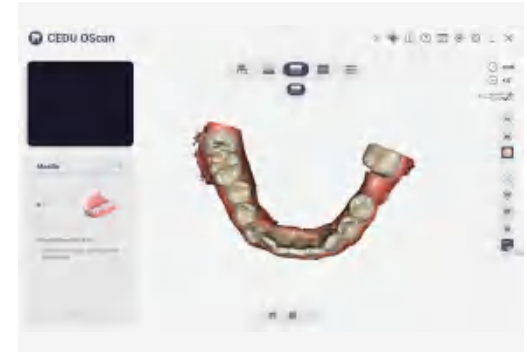
### [ COLOR SWITCH ]

One click color switching and comprehensive inspection of model data.



### [ LOCK DATA ]

Lock the position of the teeth to prevent data loss and reject excess data interference.



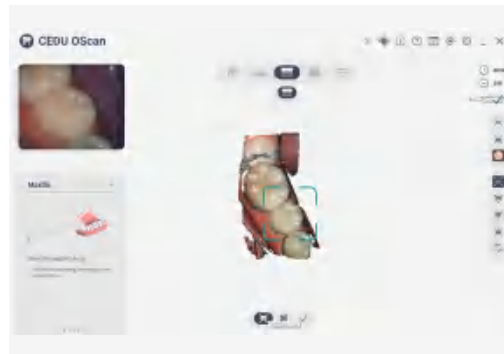
### [ SWAPPING THE UPPER AND LOWER JAWS ]

After scanning or post-processing is completed, exchange data of the upper and lower jaws. Suitable for situations where the upper and lower jaw processes are reversed during scanning.



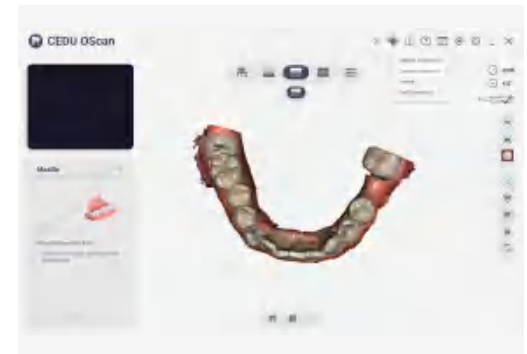
### [ ADJUSTING COORDINATES ]

Used for manually adjusting the reference coordinate system of the teeth and jaw, adjusting the tooth and jaw data to a unified standard reference coordinate system.



### [ SCANNING INDICATION ]

You can click in the image window as needed to activate scanning instructions and guide customers to convert the unshanned area to multiple angles for scanning, in order to obtain high-quality data.



### [ COMES WITH BUILT-IN SCREEN RECORDING ]

Screen recording: Record the scanning process; Screenshot: capture data measurement results, etc;

# DENTAL DESKTOP SCANNER

## CEDU QSCAN



QUICK SCAN



OPEN SYSTEM



HIGH-PRECISION



RELIABLE  
SCANNING

# CEDU 3D SCANNER

Economic, Efficiency, and Elegant. Combining these three features makes it easy to integrate our desktop scanners into your workflow.



## STABLE

Dual arm stabilizes scanner structure and minimizes motor vibration during scanning.



## CAMERA

Optimized 1.3MP/3.0MP industrial camera with 2/3 inch camera chip and 5.3um chio pixl, better details shown.



## HEAT DISSIPATION

Dual radiator design to protect projector, enabling longer projector lifetime.



## USB

Stable and fast data transfer with USB 3.0 interface.



# CEDU QSCAN



## [ HIGH PRECISION TEXTURE ]

Obtain texture data.



## [ CUSTOM SCANNING STEPS ]

You can choose the scanning order yourself,  
More adaptable to your work style and needs.



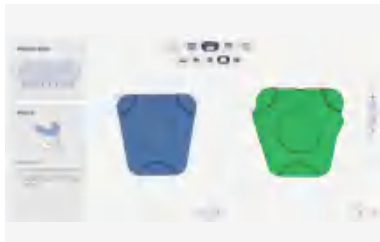
## [ REPRODUCTIVE DENTURES ]

High precision and quality. Realize the  
replication and archiving of existing dentures,  
providing more accurate references for CAD  
design.



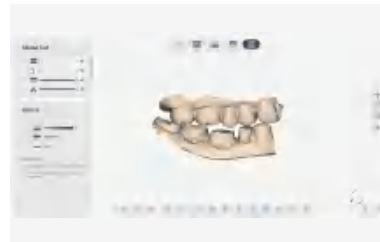
## [ GINGIVAL SCAN ]

High precision gum scanning.



## [ VIRTUAL ARTICULATOR TRANSFER ]

Can dock with KaVo and Artex racks, using  
virtual racks without the need for special  
fixtures, just scan the base to align to the  
default position.



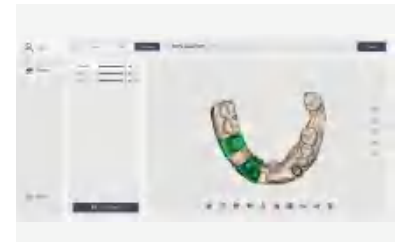
## [ BILATERAL IMPRESSION ]

The impression scanning module can  
automatically complete dual impression  
scanning, without the need for you to  
manually reverse the scanning data, to obtain  
a concise and accurate dual impression data  
and bite impression data.



## [ MULTIPLE SCANNING STRATEGIES APPLICABLE TO IMPLANT CASES ]

The CEDU QScan software can simultane-  
ously obtain scanning rod and model data, so  
you don't need to use the function of adding  
scans to repeat scans. You can scan multiple  
scanning rods at once, thereby improving  
scanning efficiency.



## [ AUTOMATIC ALIGNMENT FUNCTION ]

The powerful automatic alignment function  
eliminates the need for manual alignment  
of its model data, and can also achieve  
automatic alignment when scanning with a  
prototype disk.

# SPECIFICATION CONFIGURATION

Parameter	QScan	QScan Pro
Resolution of the cameras	1.3mp*2	3.0mp*2
Scan area	100*100*75mm	100*100*75mm
Scan principle	Phase-shifting optical triangulation	Phase-shifting optical triangulation
Size	37*35*45cm	37*35*45cm
Weight	5 Kgs	5 Kgs
Light source	LED Blue Light	LED Blue Light
Connection	USB 3.0 B-type	USB 3.0 B-type
Accuary(ISO12836)	10 μm	8 μm
Full arch scan speed	7S (8 cut)	14S (8 cut)
Texture	●	●

PC RECOMMENDED CONFIGURATION	
CPU	Intel 8th Generation I5 above
GPU	NVIDIA 1050ti-4G above
RAW	16G
SSD	128G
POWER	550W